
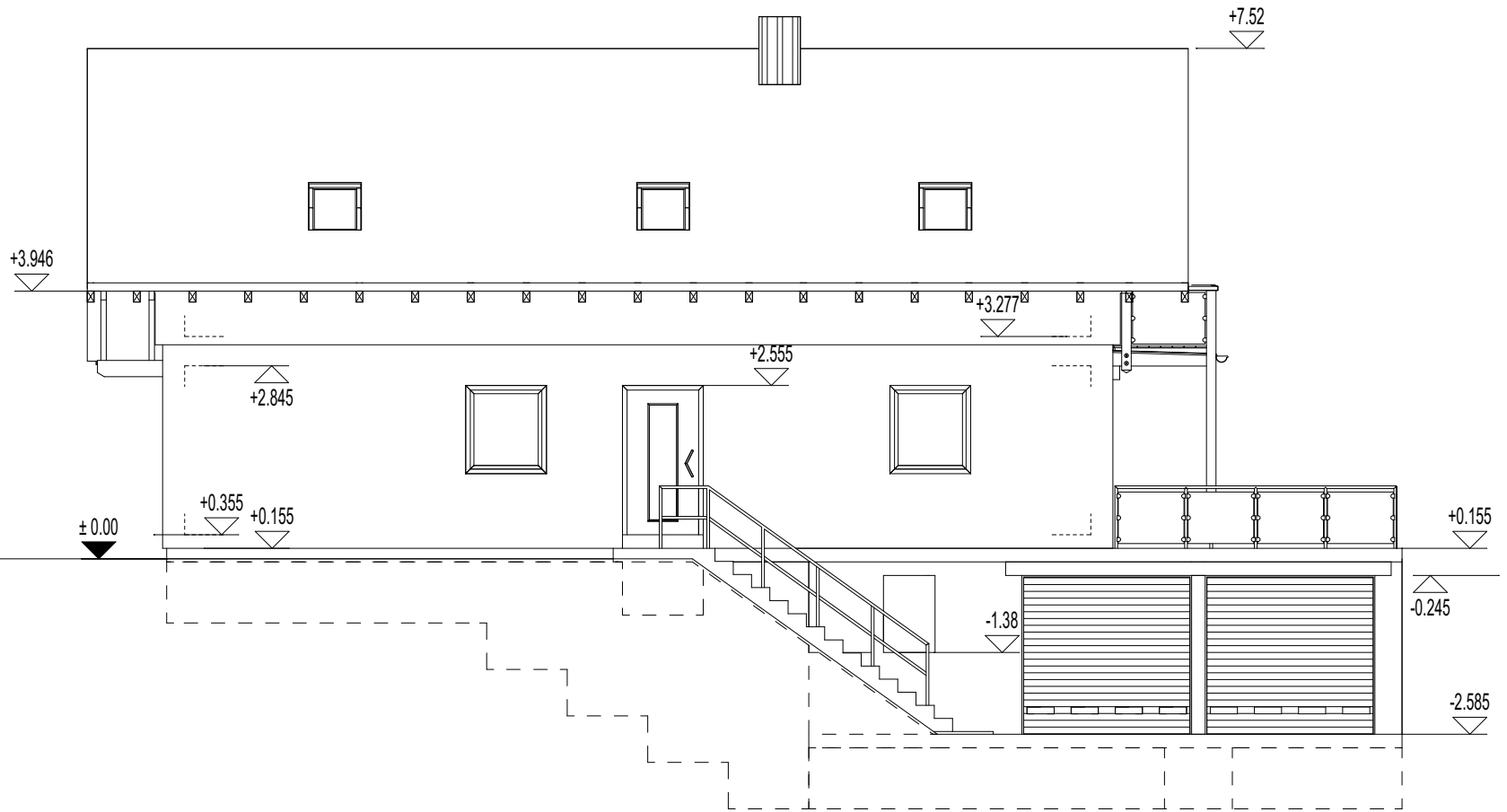


Projekt DiviBau		ANSICHT Norden	
		13.03.2024	
		Maßstab 1:100	Plan 6



Projekt DiviBau

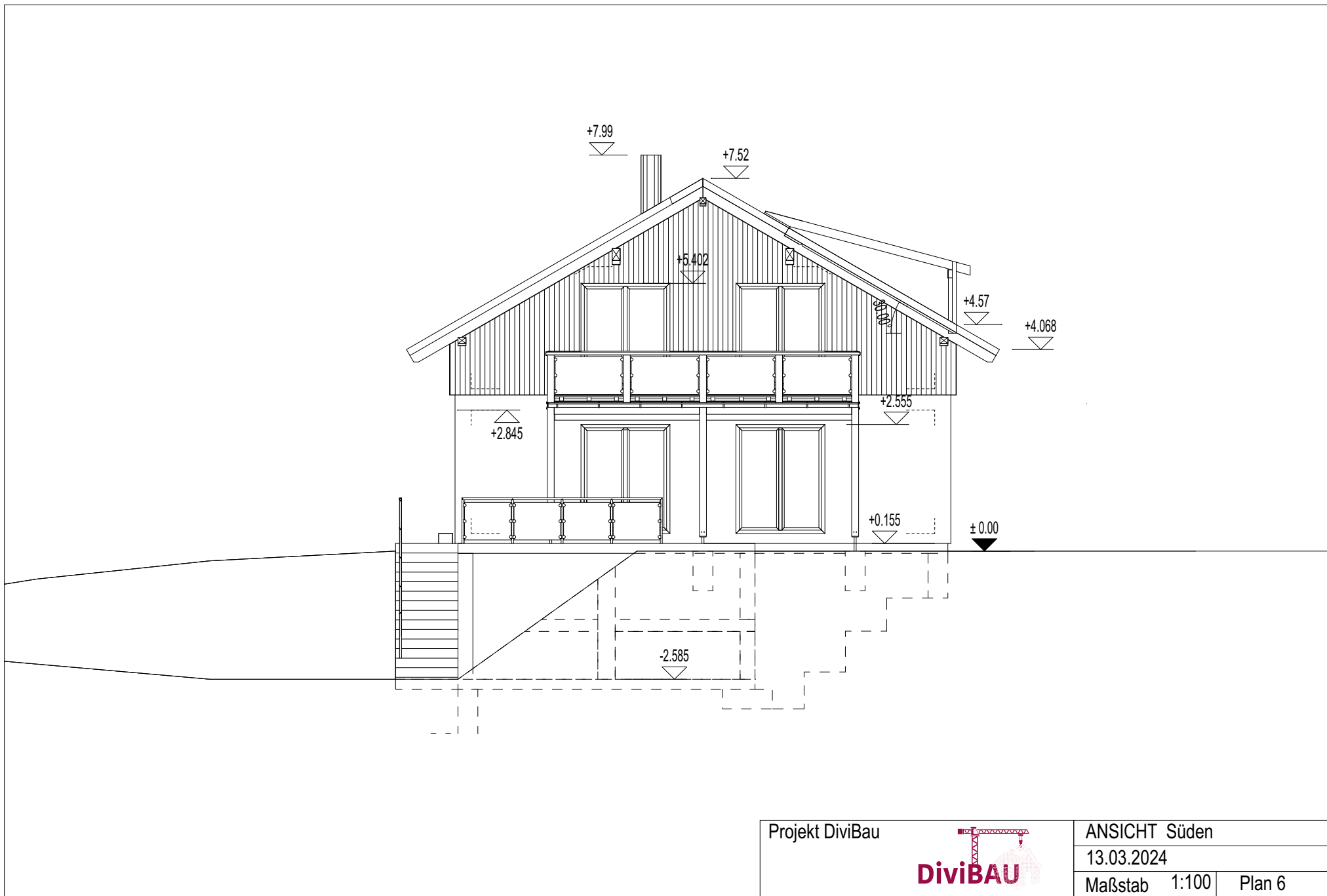


ANSICHT Osten

13.03.2024

Maßstab 1:100

Plan 6



Projekt DiviBau

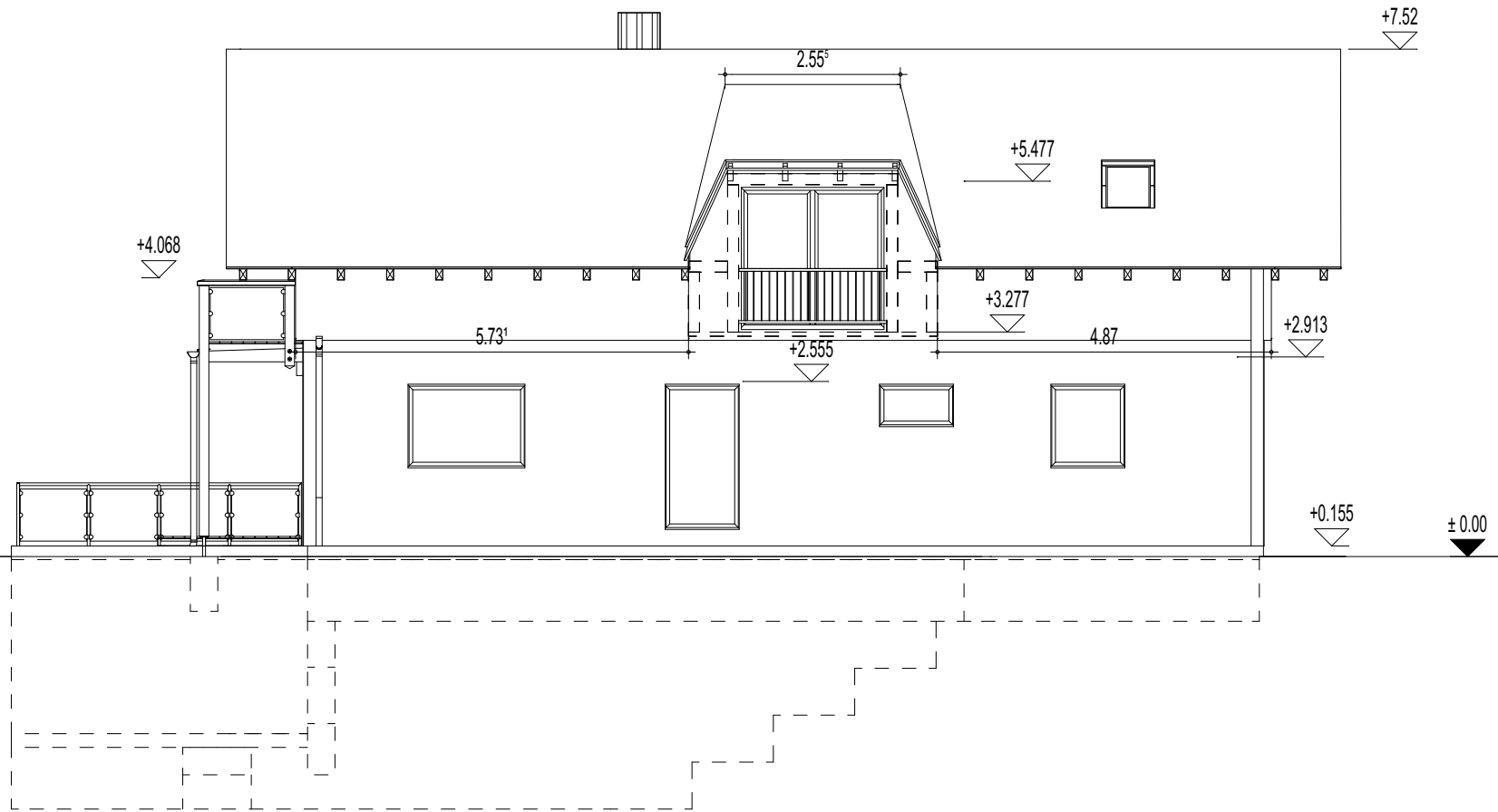


ANSICHT Süden

13.03.2024

Maßstab 1:100

Plan 6



Projekt DiviBau

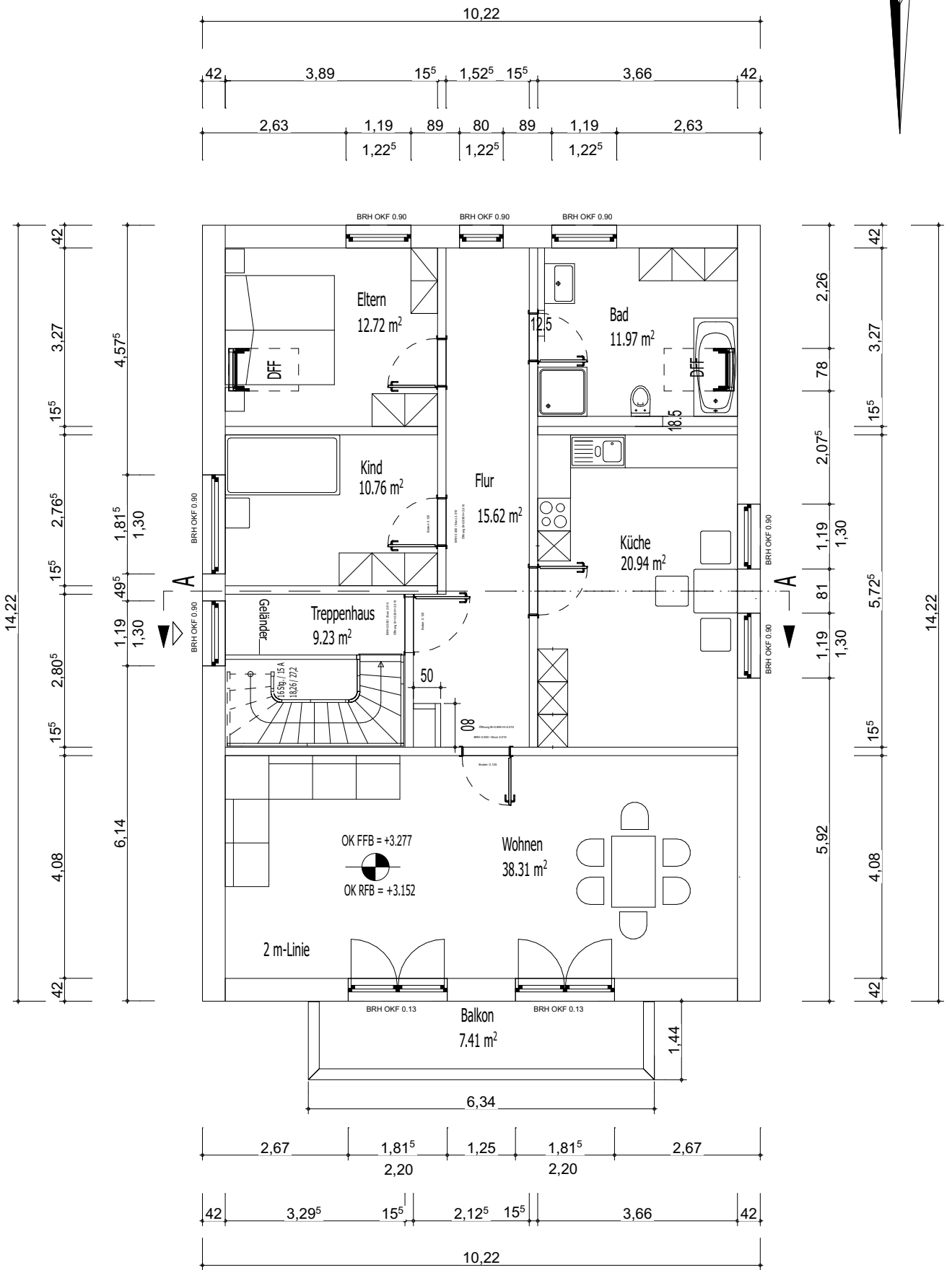


ANSICHT West

13.03.2024

Maßstab 1:100

Plan 7



Projekt DiviBau

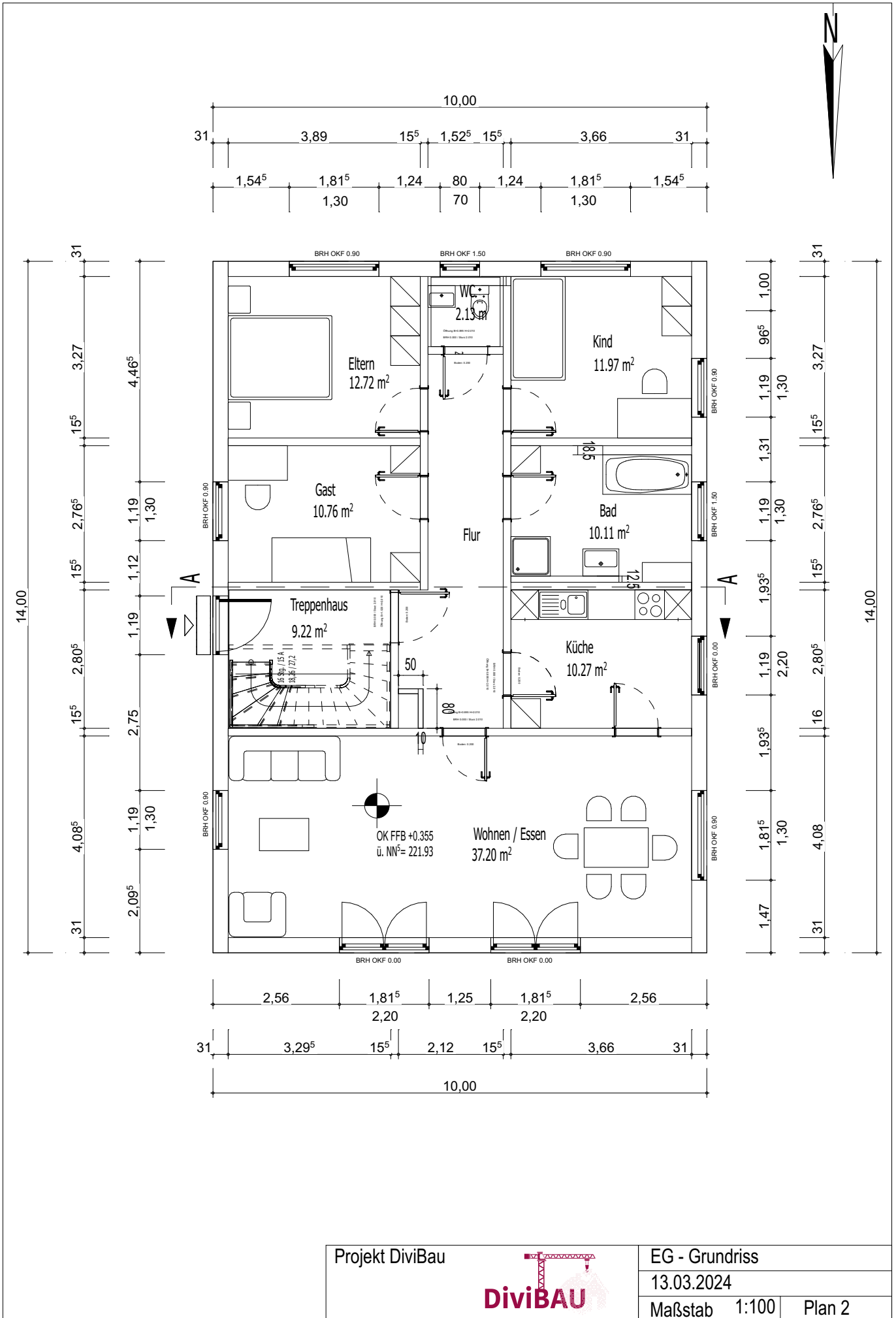


DG - Grundriss

13.03.2024

Maßstab 1:100

Plan 3



Projekt DiviBau

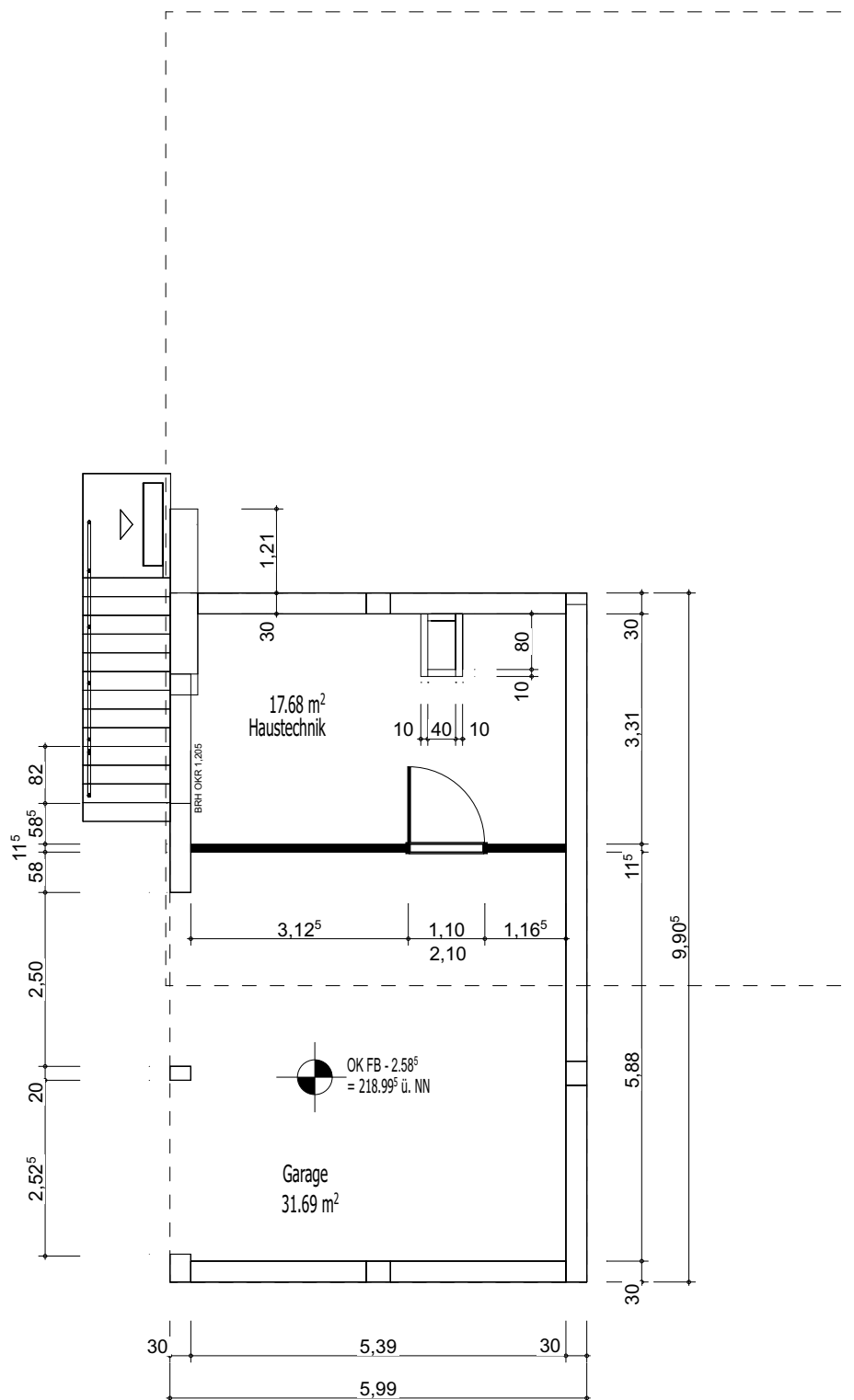


EG - Grundriss

13.03.2024

Maßstab 1:100

Plan 2



Projekt DiviBau

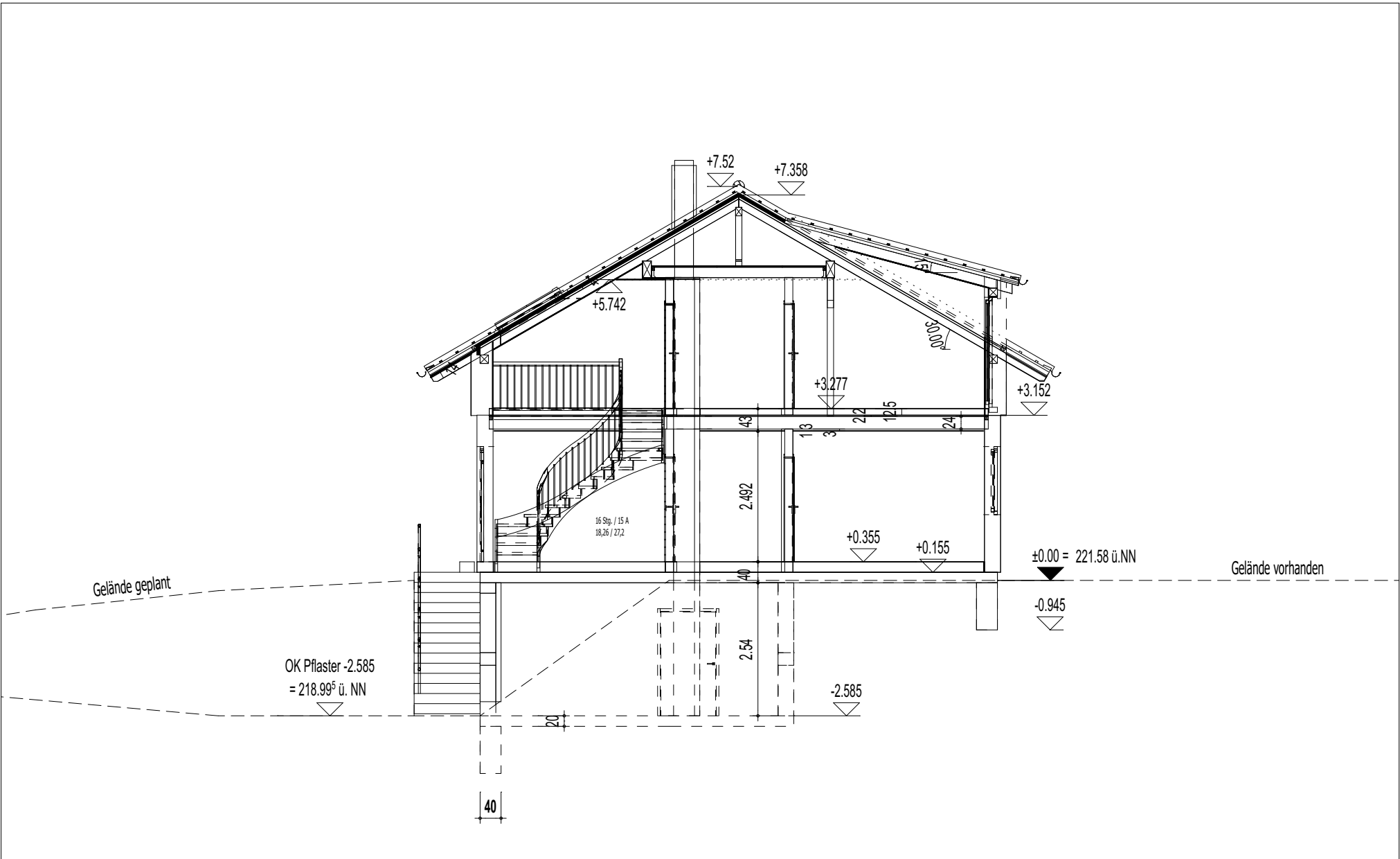



KG - Grundriss

13.03.2024

Maßstab 1:100

Plan 1



Projekt DiviBau		Schnitt A-A	
		13.03.2024	
		Maßstab 1:100	Plan 4